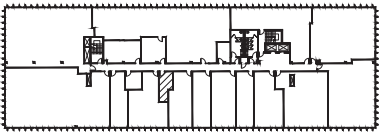


VACANCY - SUITE #234



NOTE:  
BUILDING PLANS AND  
SQUARE FOOTAGE HAVE  
NOT BEEN FIELD VERIFIED

VALLEY OFFICE PARK

10800 LYNDAL AVE

SECOND FLOOR

BLOOMINGTON, MN 55420

07/26/23

223 RSF