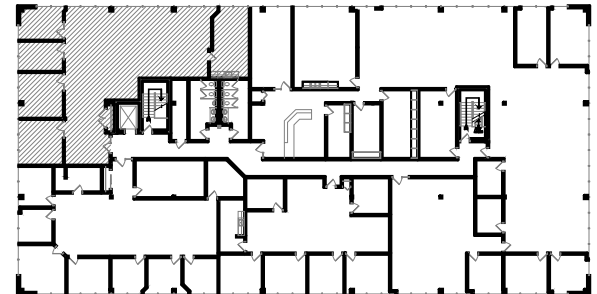


Floor Plan - 2,994 rsf  
 Scale: 1/8"=1'-0"

Building Key Plan - Third Floor



1600 Utica Avenue South  
 Suite 300  
 St. Louis Park, MN 55416

**Crosstown Woods**

**Suite 300**  
**10125 Crosstown Circle**  
**Eden Prairie, MN 55344**



5353 Wayzata Blvd., Suite 500  
 St. Louis Park, MN 55416  
 Leasing Contacts:  
 Steve Nelson: (612) 746-5022  
 Ches Masserano: (612) 338-5241  
 Mackenzie Damerow: (612) 338-3195