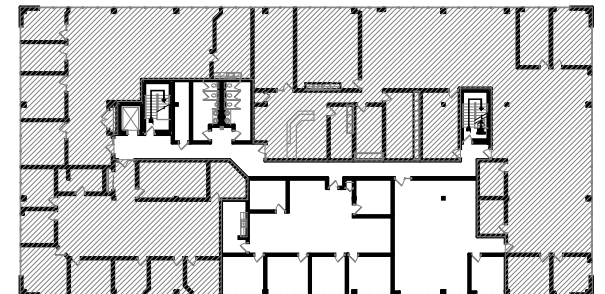


Floor Plan -13,310 rsf
 Scale: 1"=20'-0"

Building Key Plan - Third Floor



1600 Utica Avenue South
 Suite 300
 St. Louis Park, MN 55416

Crosstown Woods

Suites 300, 305 & 380
10125 Crosstown Circle
Eden Prairie, MN 55344



5353 Wayzata Blvd., Suite 500
 St. Louis Park, MN 55416
 Leasing Contacts:
 Steve Nelson: (612) 746-5022
 Ches Masserano: (612) 338-5241
 Mackenzie Damerow: (612) 338-3195