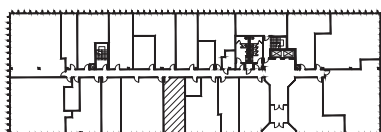


JOHN KAZ - SUITE #124



NOTE:
BUILDING PLANS AND
SQUARE FOOTAGE HAVE
NOT BEEN FIELD VERIFIED

VALLEY OFFICE PARK

10800 LYNDAL AVE

FIRST FLOOR

BLOOMINGTON, MN 55420

07/26/23

620 RSF